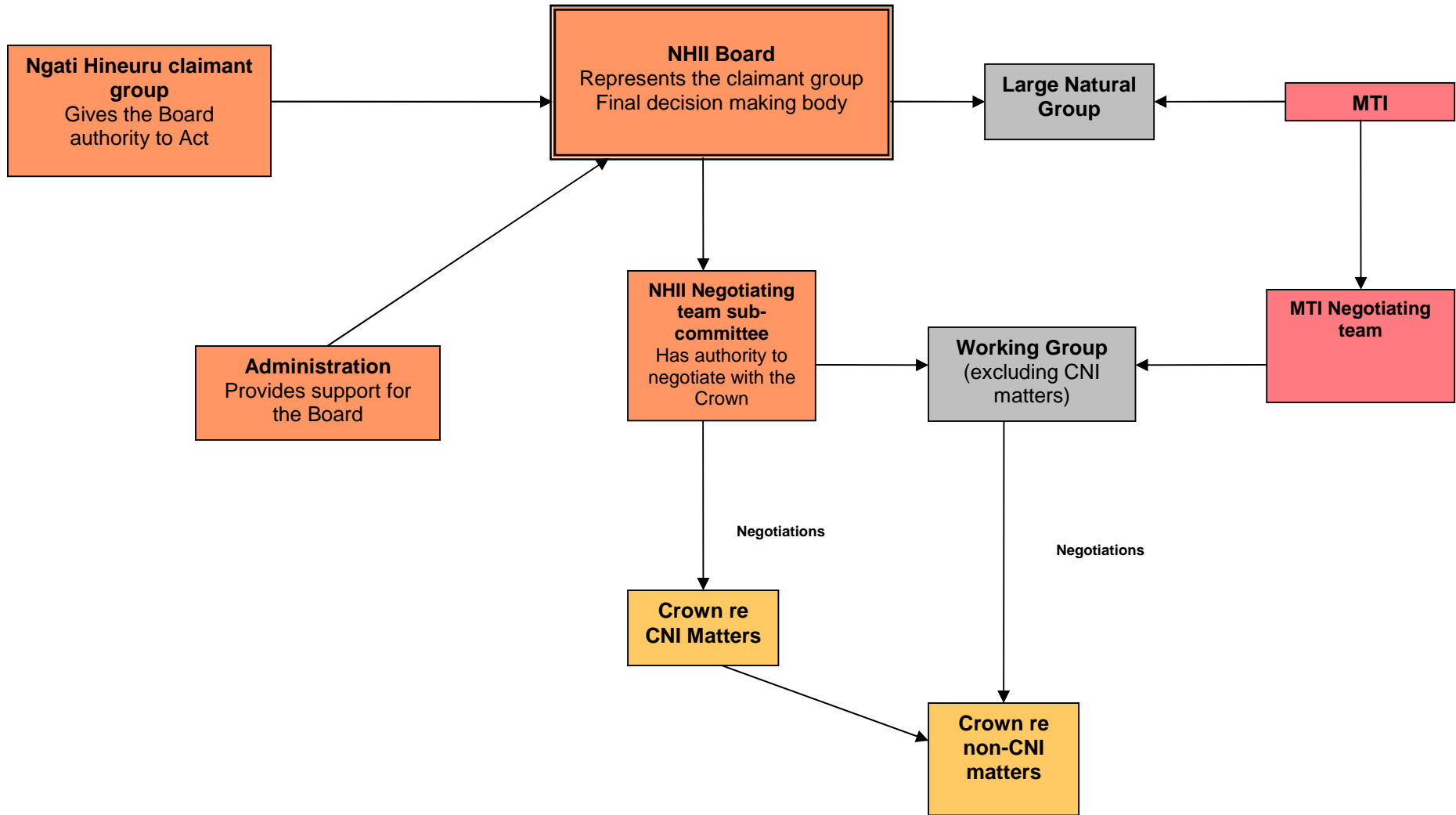


The structure of NHII



The structure of NHII

Ngati Hineuru Iwi Incorporated (NHII) is the mandated body for Ngati Hineuru and is governed by the NHII Board. It is responsible for overseeing Ngati Hineuru Treaty Settlement Negotiations with the Crown and has the ultimate responsibility for the negotiations.

The Crown's policy is to negotiate with 'Large Natural Groups' (LNGs). To fulfil this policy, NHII was required to join with MTI to form one LNG. However, NHII and MTI are separately mandated by each claimant community. Each entity has its separate boards and negotiations teams, but meet together to engage in discussions with the Crown as necessary, including to discuss overlapping interests and any shared redress.

The administration arm of NHII is responsible for overseeing the day-to-day operation of the negotiations. This includes implementing policies, plans and managing funds.

The Board delegates the task of carrying out the negotiations to the Negotiating Team. It is the Negotiating Team's role to work with the Crown to negotiate an Agreement in Principle and Deed of Settlement. However, all decisions made by the Negotiating Team are conditional on final approval by the Board. Also, the Ngati Hineuru claimant community will have the choice whether or not to ratify the Deed of Settlement.